

FARM SCALES RENTAL PROGRAM

The Ottauquechee Natural Resources Conservation District is pleased to announce the purchase of four MD400 General Electrodynamics Corp. Farm Scales. We are now offering rental of pairs of these scales for a modest daily fee within the 19-town District.

The MD400 scales are hydraulically operated scales specifically designed to measure the weight of a wheel resting anywhere on the surface. They have been used for many years in commercial and industrial applications. These scales are:

- Easy to read and accurate: Each scale handles up to 20,000 lbs. capacity, is clearly marked for good visibility and is guaranteed to be accurate to $\pm 1\%$.
- Rugged and versatile: MD400 scales are built to work in rough environments and on uneven or non-level surface areas. A low 20° ramp slope and non-skid bottom provides climbing ease.
- Easy to use: Weighing less than 50 lbs., one person can carry and setup the scale using its flexible handles. No auxiliary equipment is needed.
- Temperature compensation: These scales weigh dependably under any climate conditions. All critical parts are contained in a dust-proof enclosure.

Why rent Farm Scales?

Good nutrient management requires knowing actual crop yields and amounts of nutrient applied. Weighing a few loads of silage as they come off the field will give a more accurate estimate of the total yield, as well as weighing loads of fertilizer and manure as they are applied. Together they help determine health of fields and management changes needed.

Who can rent the Farm Scales?

Within the Ottauquechee Conservation District, the following people can rent scales:

- Farmers
- Crop Consultants
- Custom operators related to farming

How do I rent the Farm Scales?

Contact the Ottauquechee Conservation District Manager

- (802) 295-7942 x 11
- linda.schneider@vt.nacdnet.net

When and where do I get the Farm Scales?

Scales can be picked up weekdays at and returned in clean condition to the District office, 28 Farmvu Drive, White River Junction, VT, located off Holiday Drive by the Post Office on Sykes Avenue. Rental arrangements and payment must be made in advance with the Ottauquechee Conservation District Manager.

What will it cost?

Your tax deductible donation is greatly appreciated. Make checks payable to ONRCD.

How many scales do I need?

One pair of scales is needed for trailers, wagons and spreaders. Two pairs of scales will be better for weighing 10-wheelers, four-wheel wagons and tandem axels.

How do I operate the scales?

1. Place the scales in position to be weighed.
2. Rotate the adjustment knob until the indicator hairline is in ZERO position.
3. Slowly move the vehicle until the tire is resting on the platform top. Both sides of any single axle must be weighed at the same setting. If the vehicle has tandem tires, ensure the inner tire is not contacting the ground.
4. Read the weight through the dial window. Scales must be returned in the same clean, usable condition in which they were rented. If they have come into contact with manure, the scales must be washed with a Clorox/water solution.

How well do the Farm Scales work?

"They're built pretty rugged...they worked well. It's not too big a pain to drive onto the scale pads, and they're easy to read."
--Carl Majewski, University of New Hampshire

"They are easy enough to use."

--George Miller, Val Vu Farm, White River Jct



The Ottauquechee Natural Resources Conservation District offers the **Farm Scales Rental Program**.

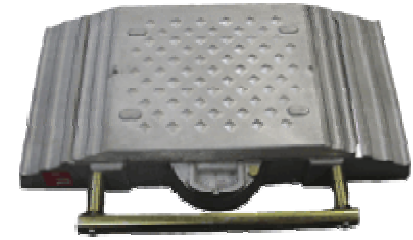
The Ottauquechee Natural Resources Conservation District, formed in 1946, *"helps individuals, groups and communities conserve their land and water by providing education, information, demonstrations and technical assistance"*.

For more information about The Ottauquechee Natural Resources Conservation District please visit our website: <http://vacd.org/onrcd>



Ottauquechee Conservation District
28 Farmvu Drive
White River Jct., VT 05001

FARM SCALES RENTAL PROGRAM



Ottauquechee Natural Resources Conservation District

28 Farmvu Drive
White River Jct., VT 05001

<http://vacd.org/onrcd>

802-295-7942 Ext. 11

The Farm Scales Rental Program is made possible by funding from the US EPA's 319 grant program and the Ottauquechee Natural Resources Conservation District.